

ASTAR - PhysioMG 815

Magnetoterapia



ERGONOMY

- visual indicator of the magnetic field activity – illuminator
- a sensory indicator of the magnetic field activity – magnetic stripes
- setting the frequency range of the magnetic field with an accuracy of 0,01 Hz using the on-screen keyboard
- 5" color touchscreen
- operation mode: program/ manual
- built-in treatment programs
- disease entities selected by name or therapy field
- illustrated encyclopedia with a description of the treatment methodology
- a handy list of favorite programs
- the ability to edit program names and user sequences
- statistics of the performed treatments
- volume control of the signaling sound
- self-test – current check of the unit performance

MAGNETIC FIELD

- field shape: rectangular modified, triangular, sinusoidal, impulse, half rectangular modified, semi-triangular, half-sine, half-pulse
- continuous and impulse emission
- wide frequency range
- high induction of the magnetic field

MANUAL MODE

Full control over the treatment parameters for the advanced users PhysioMG 815 low-frequency magnetic field therapy unit

TREATMENT PROGRAMS

- simplified operation on the unit
- 50 built-in treatment programs for the CS60 applicator
- 28 built-in treatment programs for the CS35 applicator
- 46 built-in treatment programs for the CP applicator
- 50 user-defined programs
- favorite programs

TREATMENT SEQUENCES

- simplified operation on the unit
- 10 user-defined sequences
- creating your own names of the sequences

TECHNICAL PARAMETERS

- maximum nominal induction in the geometric center of the applicator:
 - applicator CS60 4 mT
 - applicator CS35 10 mT
 - applicator CP 3 mT
- maximum nominal induction at the surface of the applicator:
 - applicator CS60 6 mT
 - applicator CS35 12 mT
 - applicator CP 12,5 mT
- the maximum value of induction change:
 - applicator CS60 12 mT
 - applicator CS35 24 mT
 - applicator CP 25 mT
- parameters of the intermittent mode pulse 1 s/ pause 0,5 – 8 s
- frequency spectrum 0 – 50 Hz
- treatment clock maximum 60 minutes
- power supply, power consumption 230 V \pm 10 %, 50/60 Hz, 350 VA
- controller dimensions 34 x 28 x 11 cm
- controller weight max 7 kg

STANDARD EQUIPMENT

- | | |
|------------------------------------------------|------|
| • Mains cable | 1pc |
| • Spare fuses WTA-T 3,15 A/250 V | 2pcs |
| • Permanent magnet | 1pc |
| • Protective glasses for the patient – goggles | 1pc |
| • Tracer for a resistive touch screen | 1pc |
| • Cloth for the LCD screen | 1pc |
| • Magnetic stripe | 1pc |

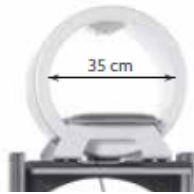
TECHNICAL PARAMETERS

- maximum nominal induction in the geometric center of the applicator:
 - applicator CS75 3 mT
 - applicator CS60 4 mT
 - applicator CS35 10 mT
 - applicator CP 3 mT
 - applicator CPEP 25 mT

ACCESSORI DISPONIBILI



Solenoide da 35 cm - CS35



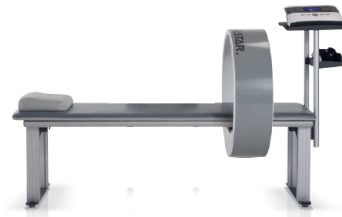
Solenoide da 60 cm - CS60;



Applicatori CP con carrello



Lettino per Magnetoterapia



Carrello VERSA



Carrello per solenoide CS35

